

IGMP Snooping

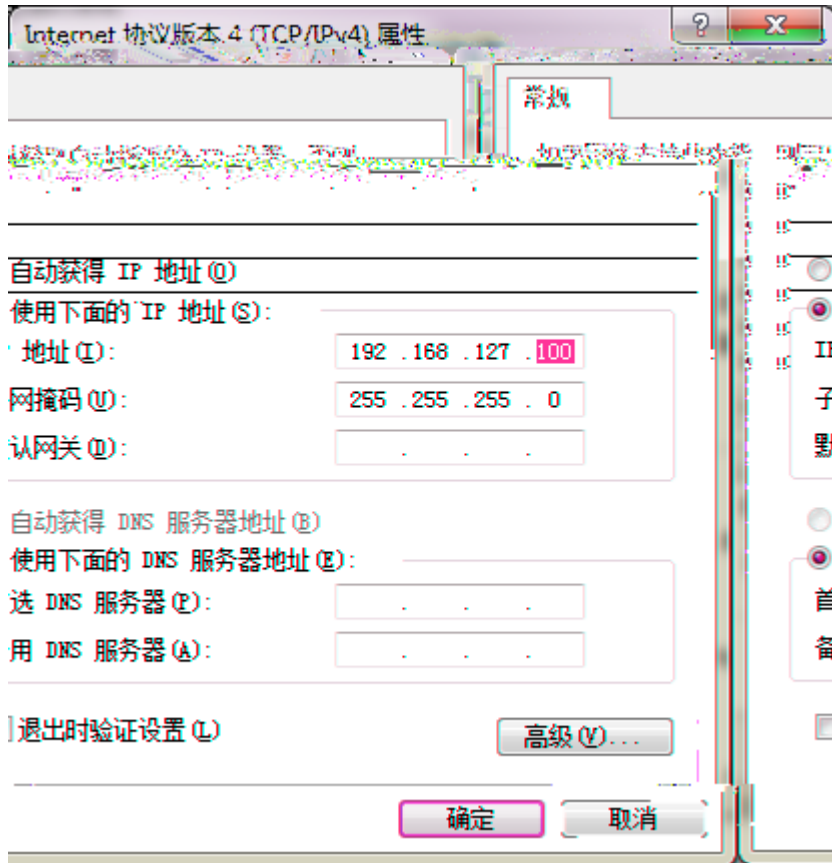
	2
	2
1	2
2	3
3	IGMP Snooping.....	4
IGMP Snooping	5

192.168.127.xxx

PC

IP

192.168.127.0



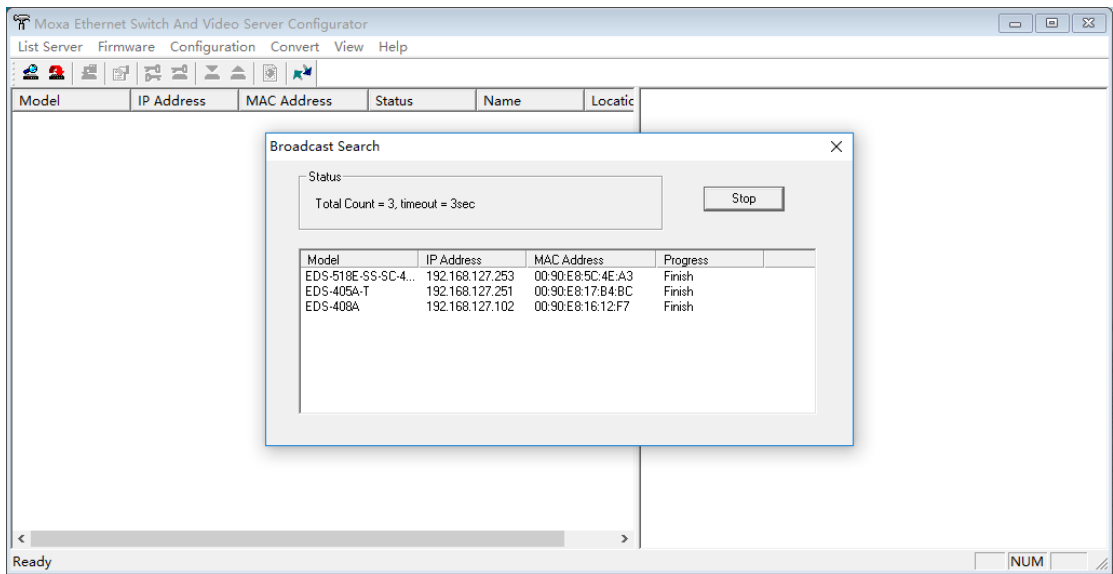
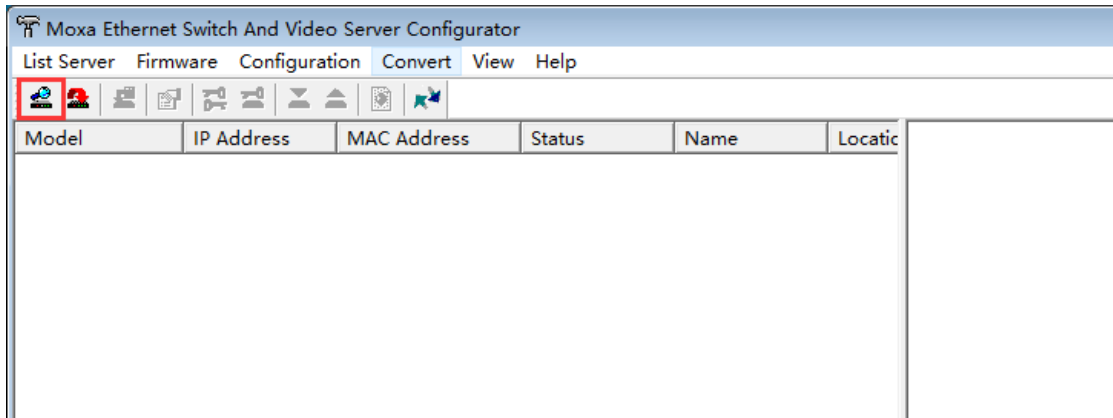
1

Search

edscfgui

<https://www.moxa.com/drivers/EDS/utility/V5.3/edscfgui.exe>

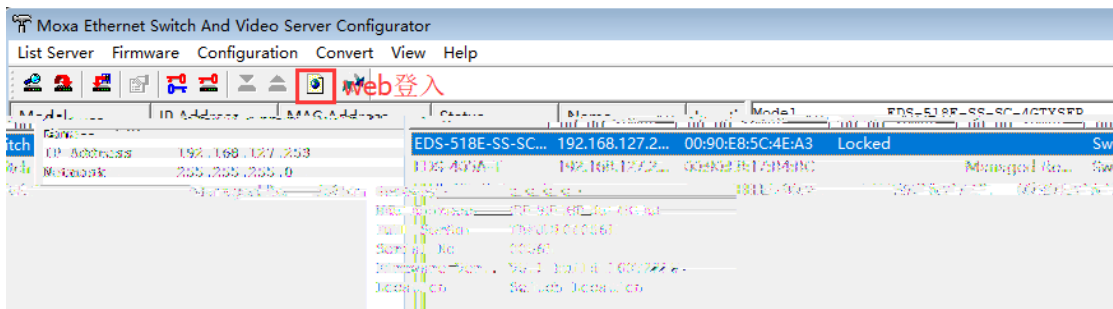
edscfgui



2

edscfgui

web



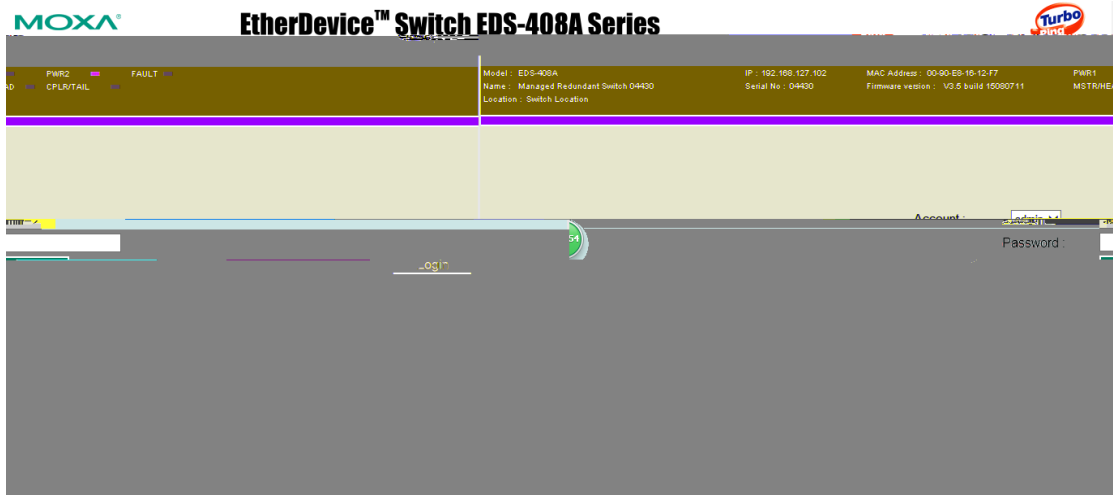
Web

IP

admin

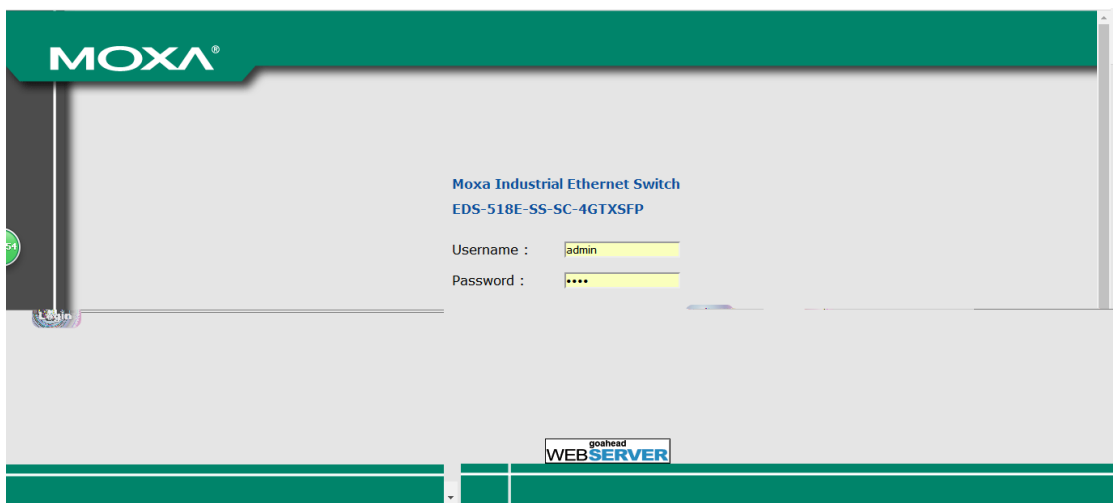
moxa

EDS-400A



EDS-500E

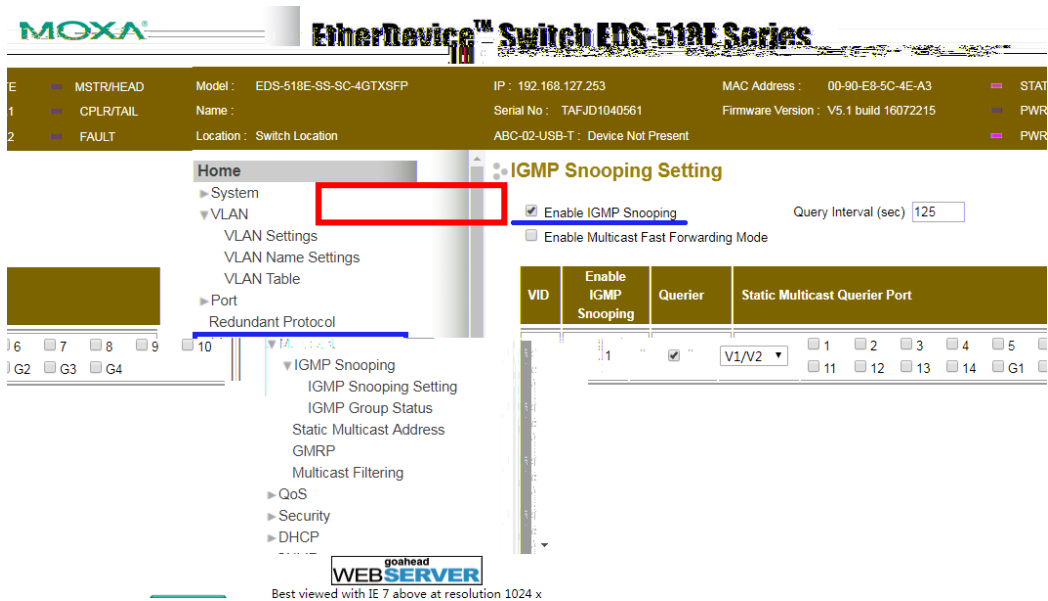
moxa



3 IGMP Snooping

IGMP Snooping Setting

Enable IGMP Snooping



IGMP Snooping

IGMP

Snooping

IGMP Table

The screenshot shows a network management interface with a sidebar menu on the left and a main content area. The sidebar menu includes options like 'IGMP Snooping Settings', 'IGMP Table', and 'Static Multicast MAC'. The main content area is titled 'Current Active IGMP Groups' and contains a table with the following data:

VID	Auto Learned Multicast	Static Multicast	Querier Connected	Act as Querier	IP	Active I
1			Yes	234.5.6.5 239.255.255.250	01-00-5E-05-06-053 01-00-5E-7F-FF-FA3	

The table has a red box highlighting the 'Act as Querier' and 'IP' columns for the first entry. The interface also features a 'Main Menu' with 'Overview', 'Basic Settings', and 'SNMP Settings' options. A 'goahead WEB SERVER' logo is visible in the bottom right corner.