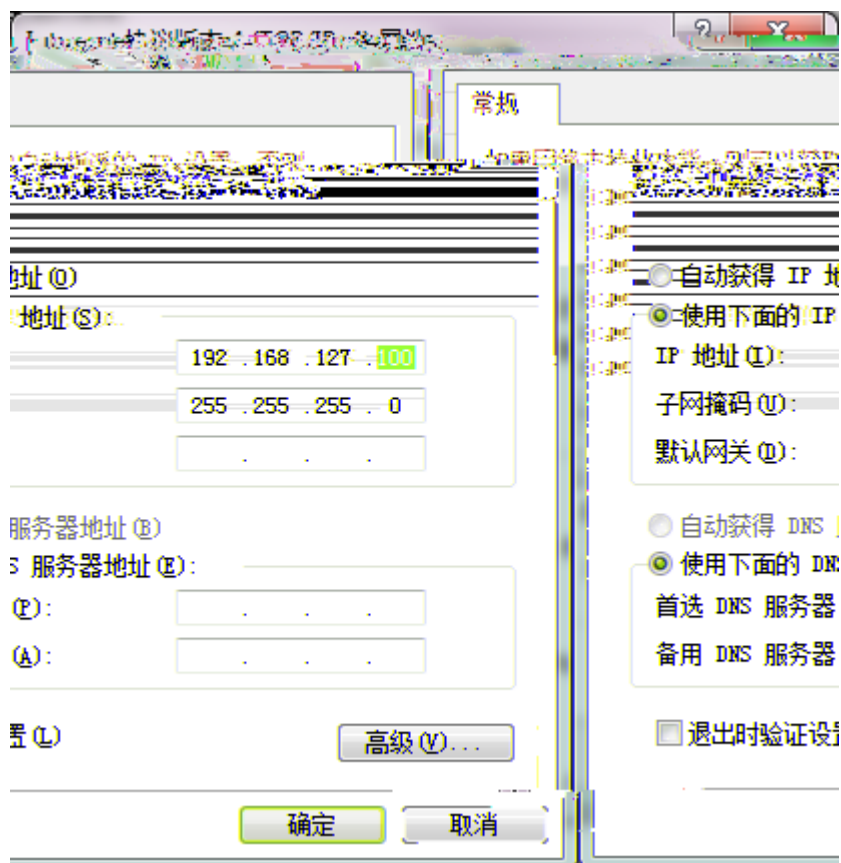
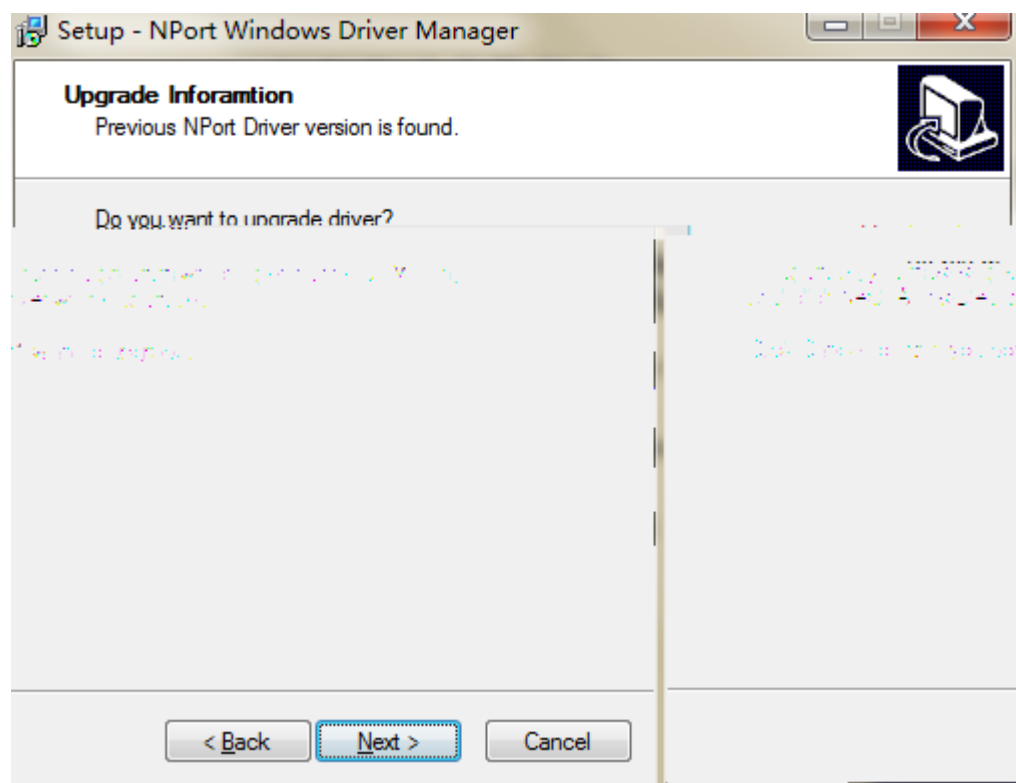
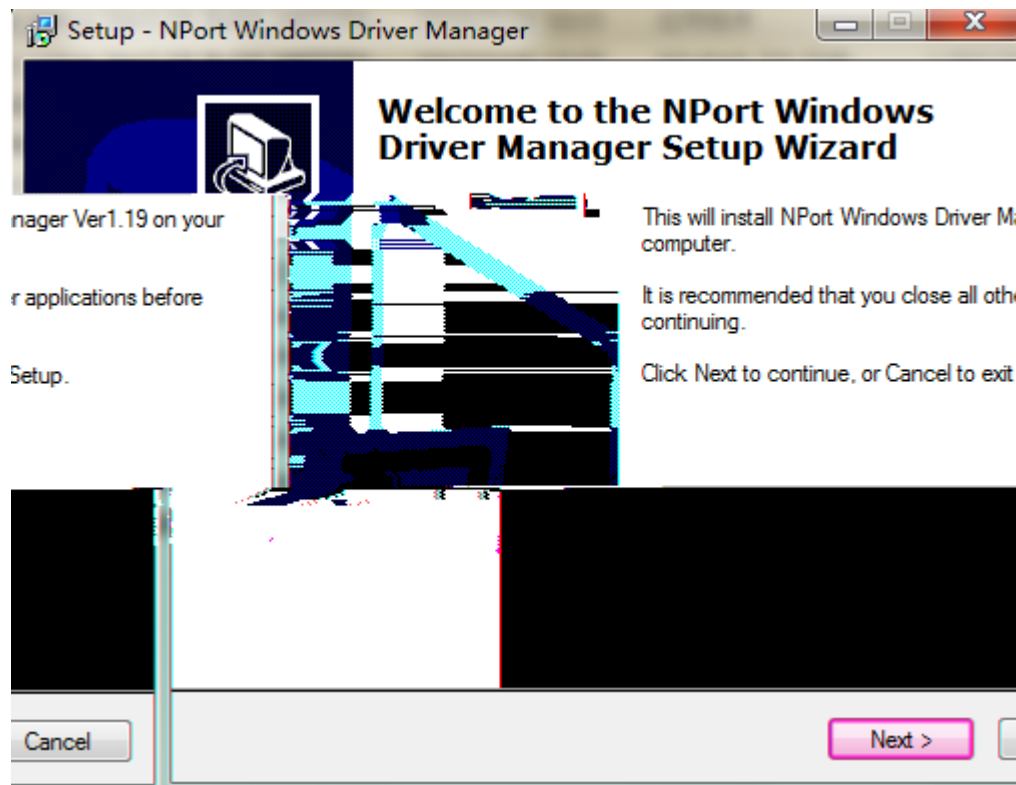


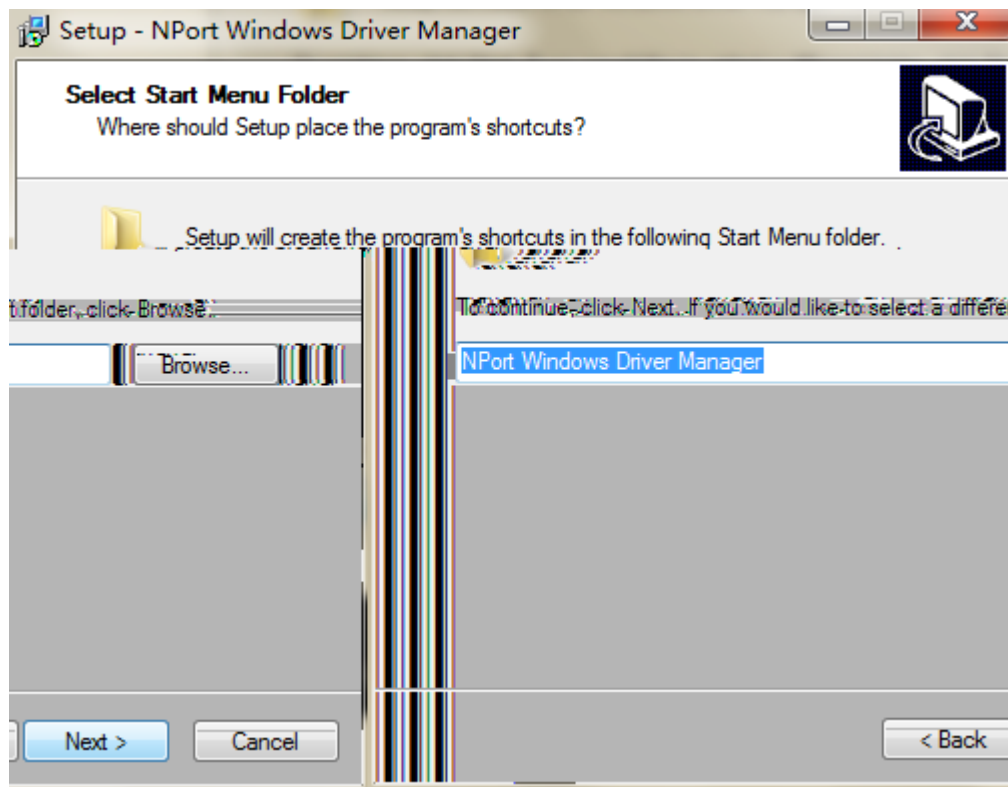
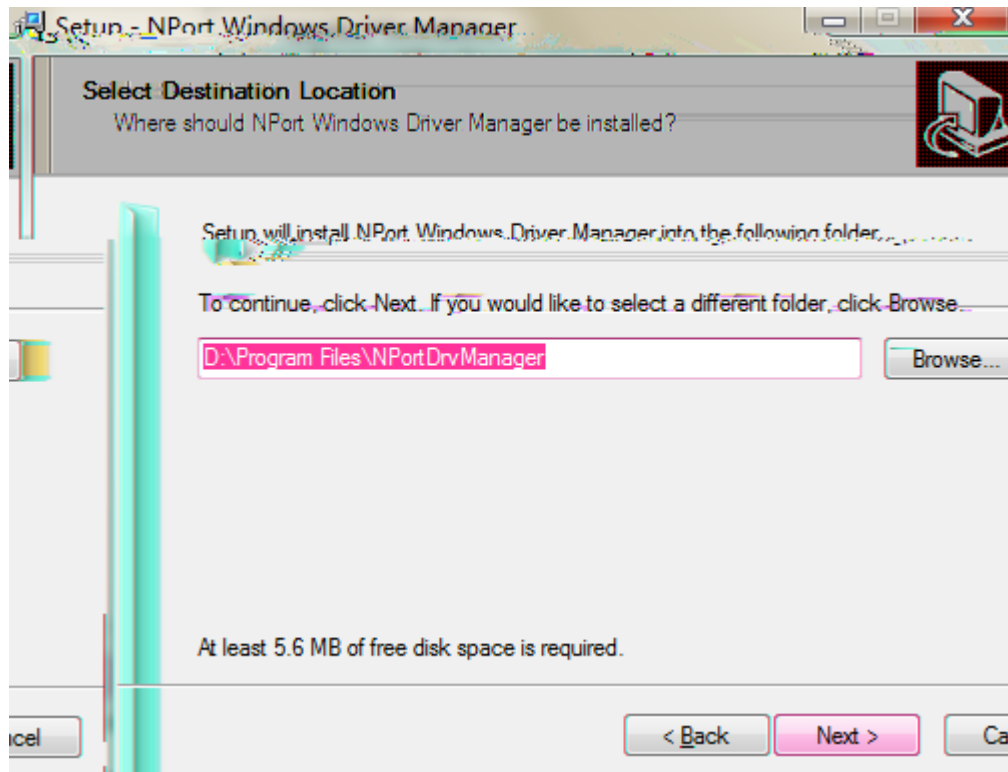
1

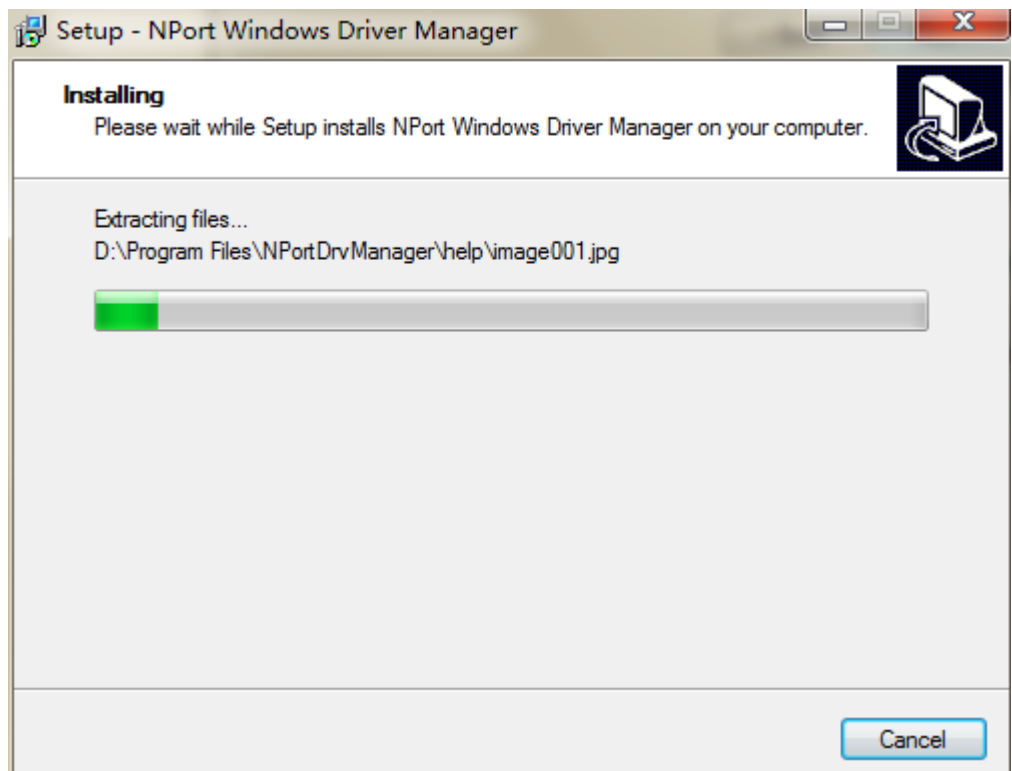
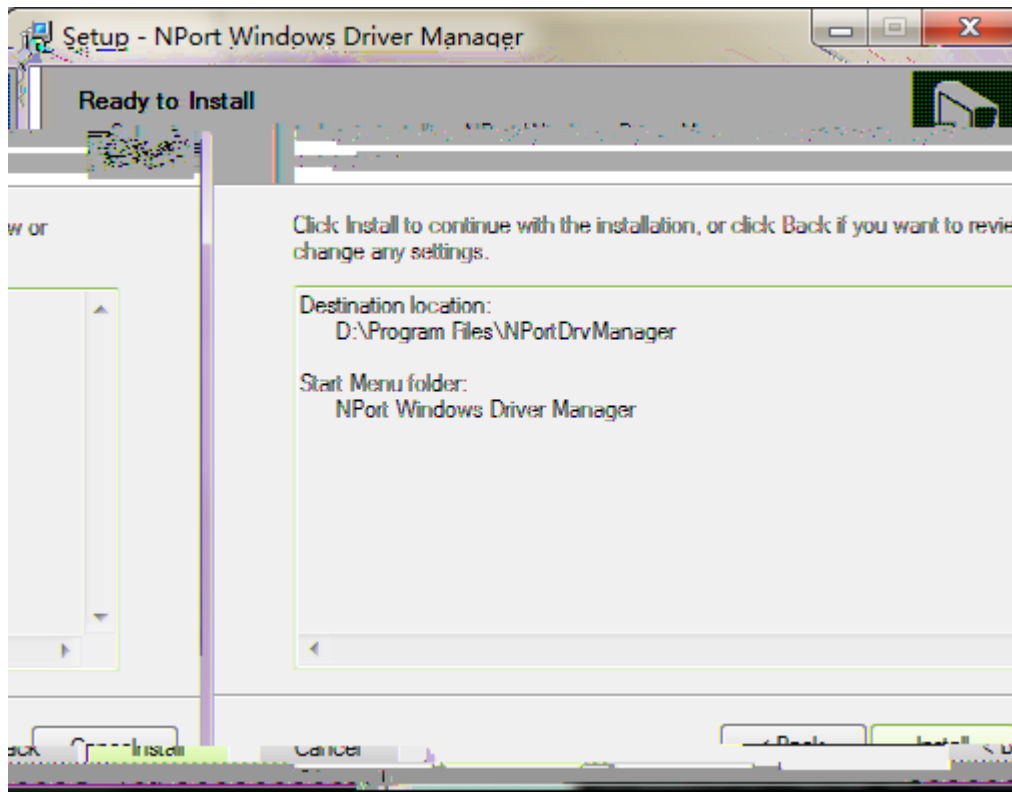


2

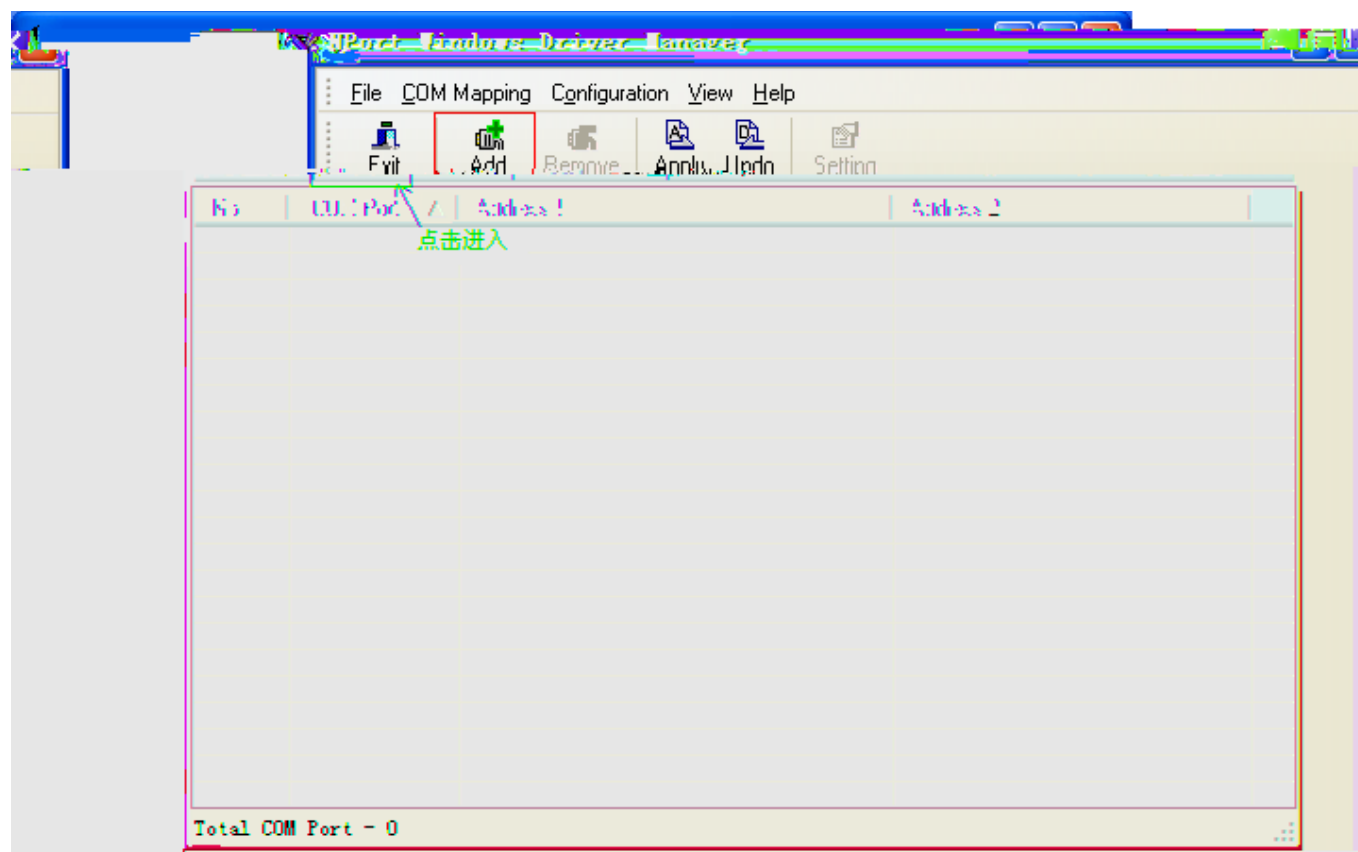
NPort

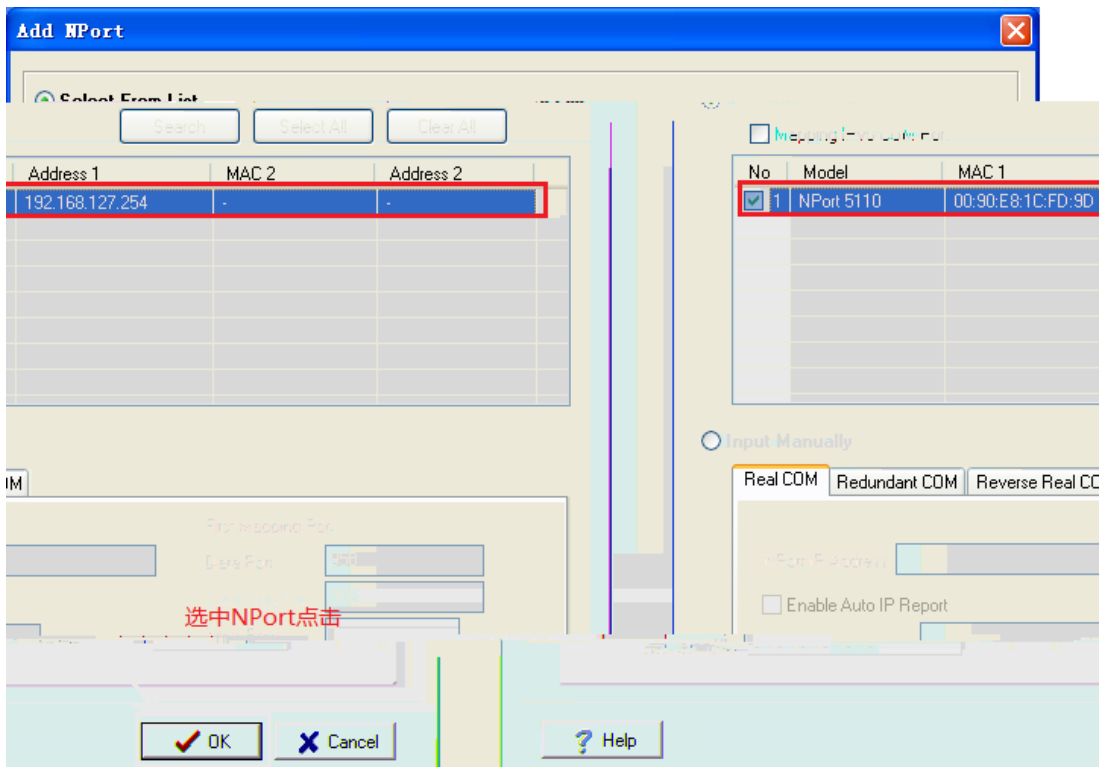
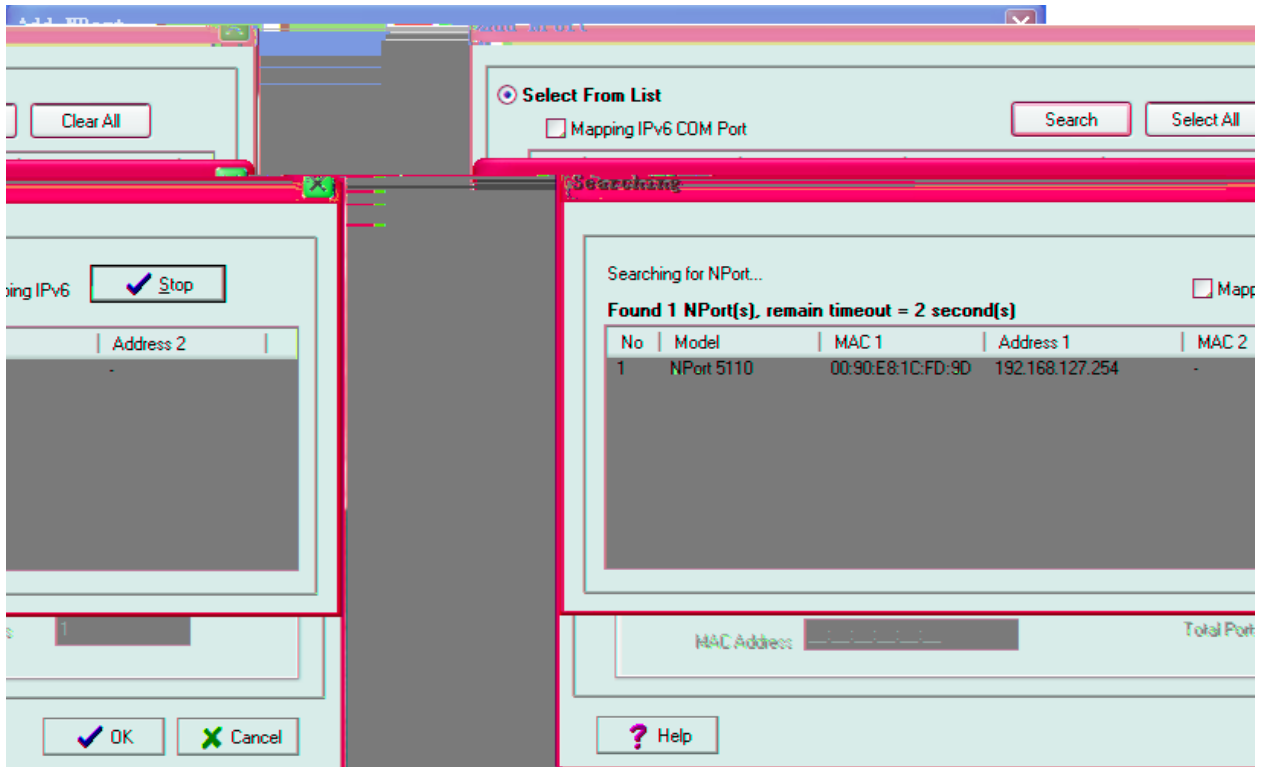


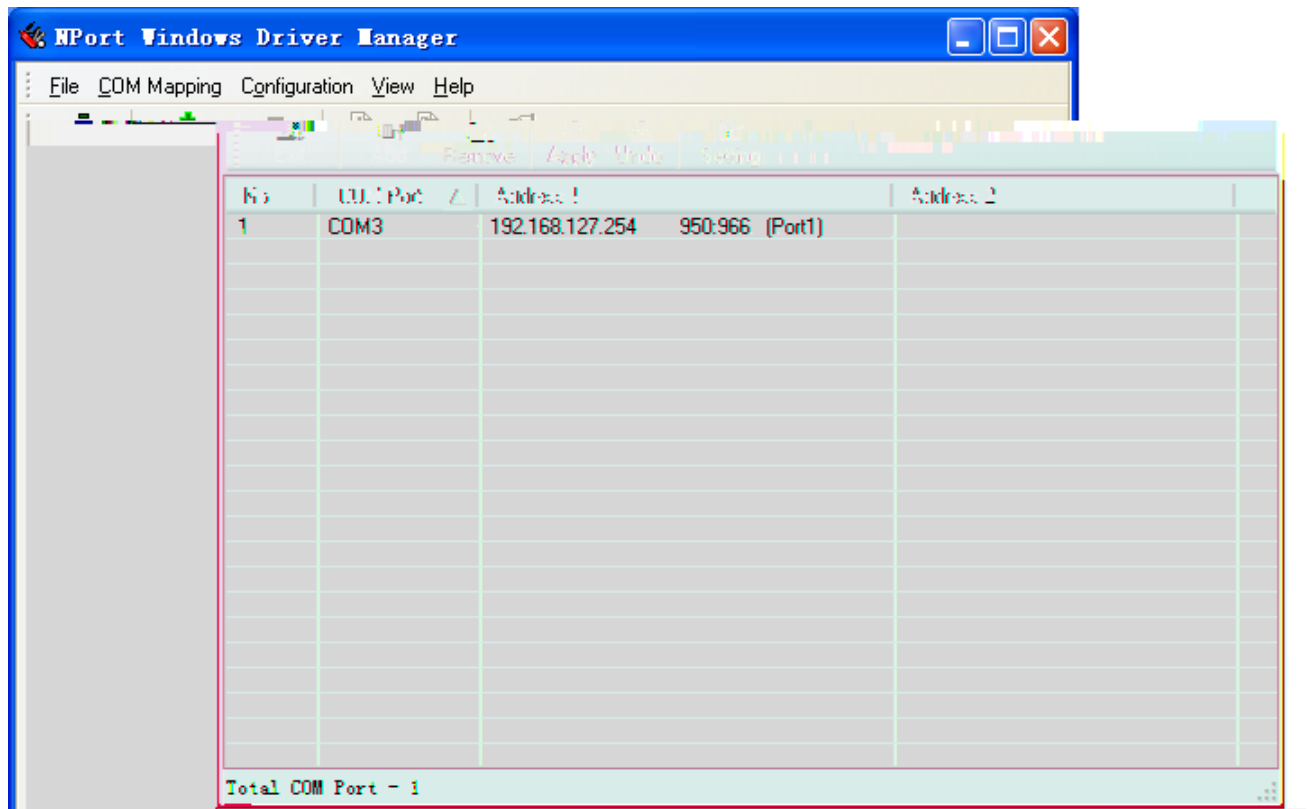
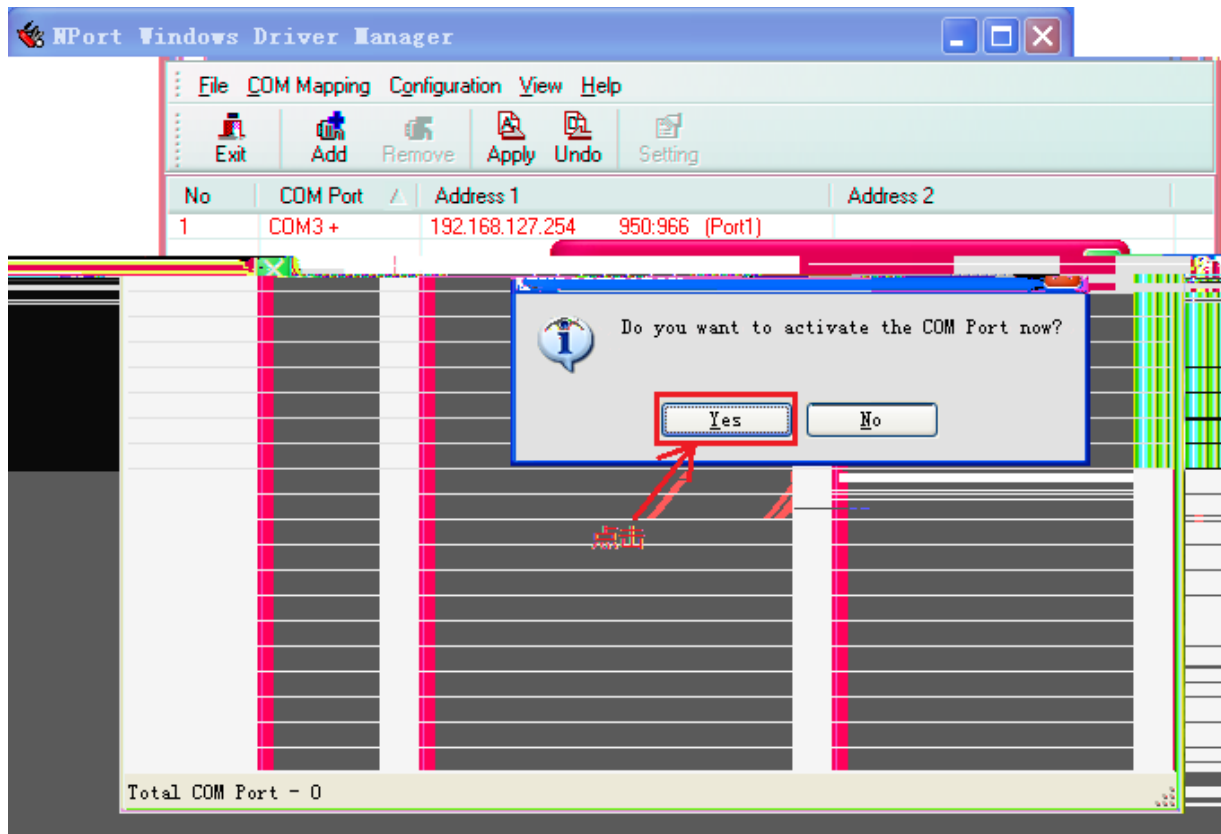


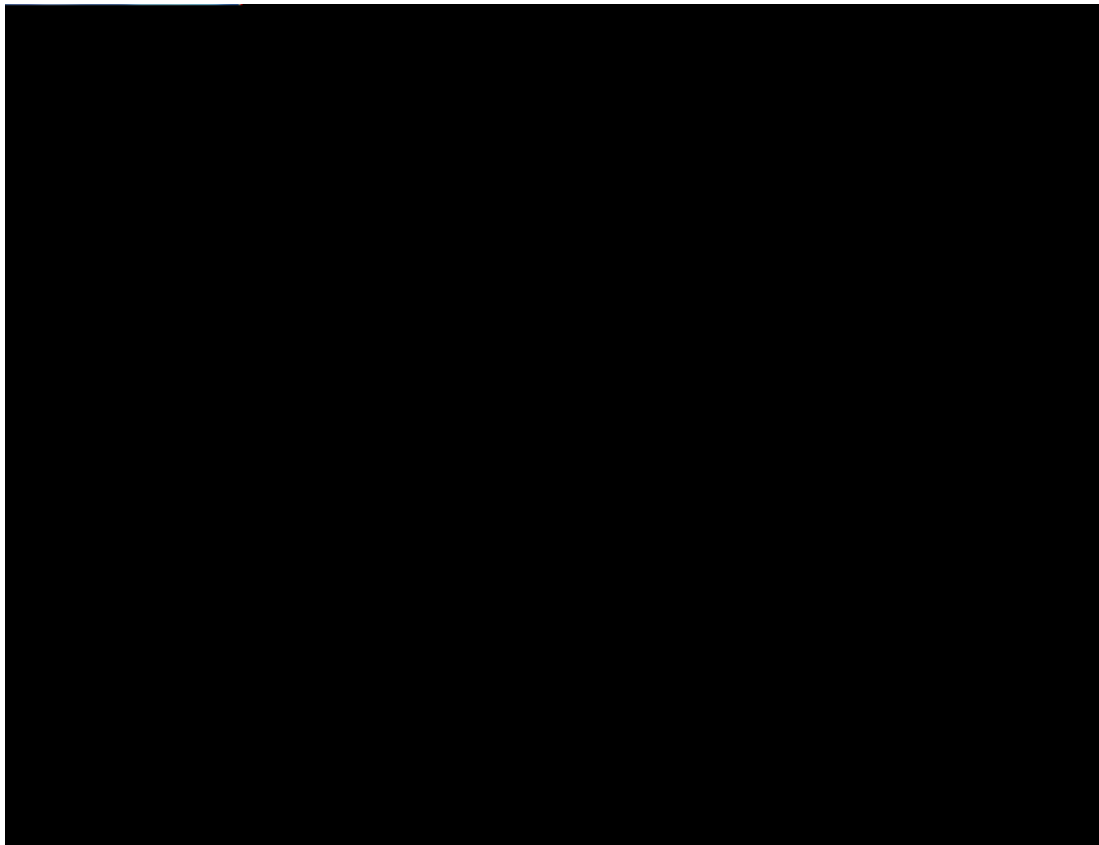


1









NPort

MOXA www.moxa.com

- Main Menu
 - Overview
 - Basic Settings**
 - Network Settings
 - Serial Settings
 - Operating Settings
 - Accessible IP Settings
 - Auto Warning Settings
 - Monitor
 - Change Password
 - Load Factory Default
 - Save/Restart

Basic Setting

Server name	<input type="text" value="NP5110_1035"/>
Settings	
Web console	<input checked="" type="radio"/> Enable <input type="radio"/> Disable
Telnet console	<input checked="" type="radio"/> Enable <input type="radio"/> Disable
Reset button protect	<input checked="" type="radio"/> No <input type="radio"/> Yes

MOXA www.moxa.com

Basic Settings OK!

Warning! The changes will take affect until Save/Restart the NPort.

You can Save/Restart NPort now or Save/Restart NPort until all other settings configured.

Main Menu

- Overview
- Basic Settings
- Network Settings
- Serial Settings
 - Port 1
- Operating Settings
 - Port 1
- Accessible IP Settings
- Auto Warning Settings
- Monitor
- Change Password
- Load Factory Default
- Save/Restart

MOXA www.moxa.com

Network Settings

IP Address

192.168.127.254

255.255.255.0

Static

SNMP Setting

Enable Disable

public

IP Address report

4002

10 seconds

Main Menu

- Overview
- Basic Settings
- Network Settings**
- Serial Settings
- Operating Settings
- Accessible IP Settings
- Auto Warning Settings
- Monitor
- Change Password
- Load Factory Default
- Save/Restart

IP address

Netmask

Gateway

IP configuration

DNS server 1

DNS server 2

SNMP

Community name

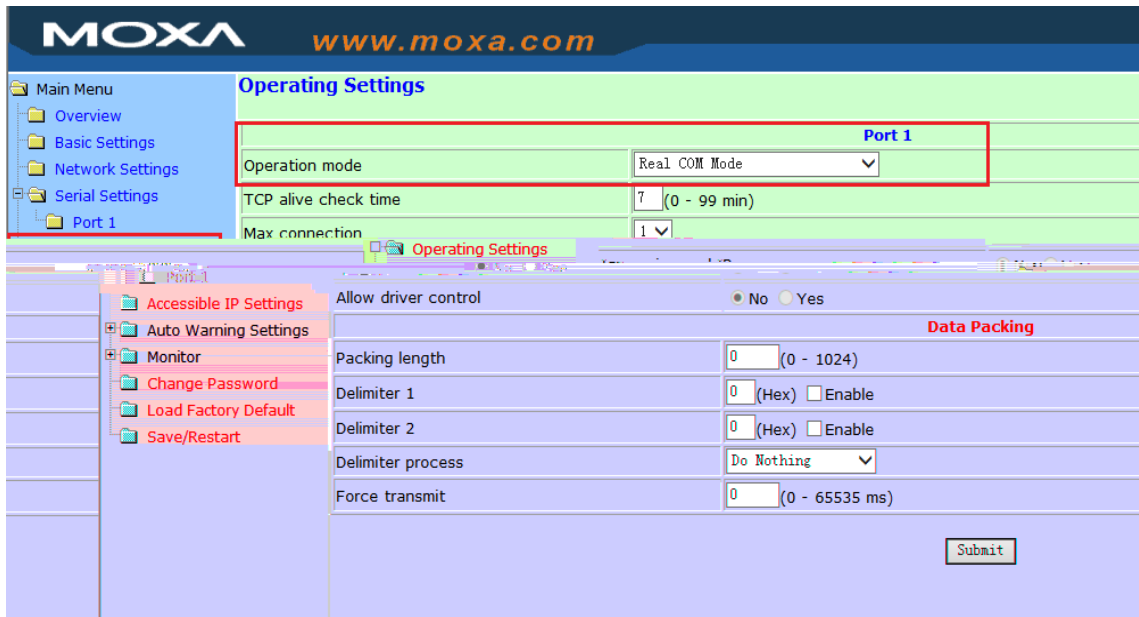
Contact

Location

Auto-report to IP

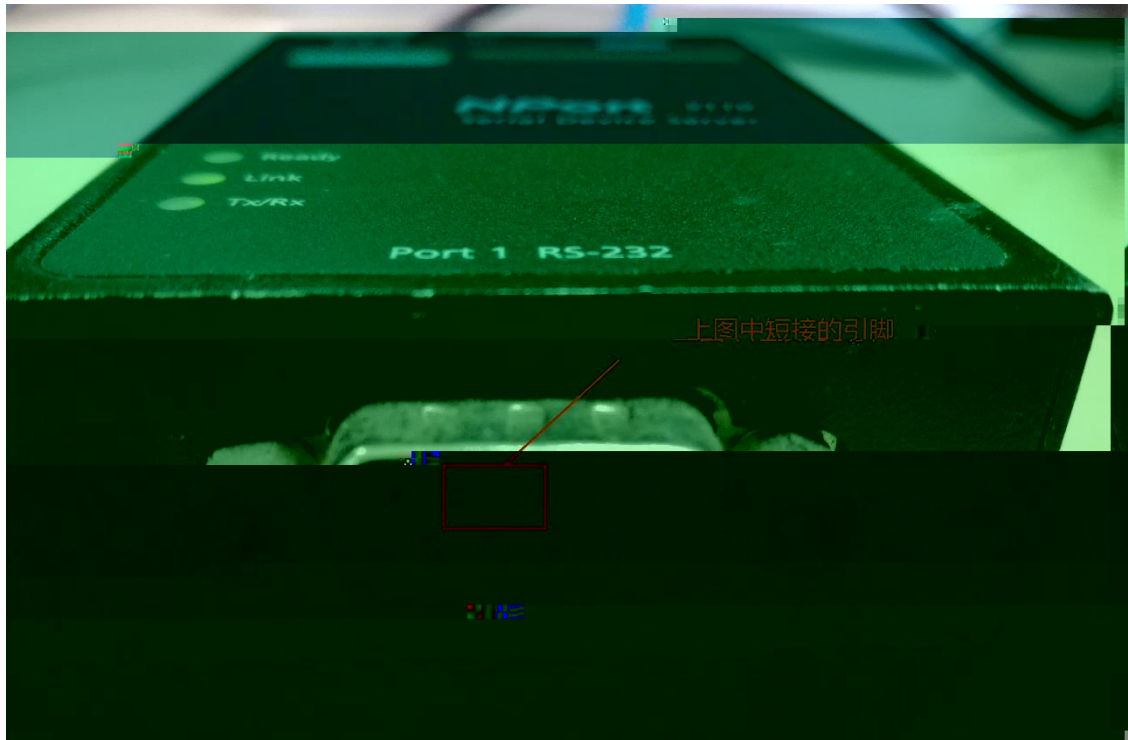
Auto report to UDP port

Auto report period

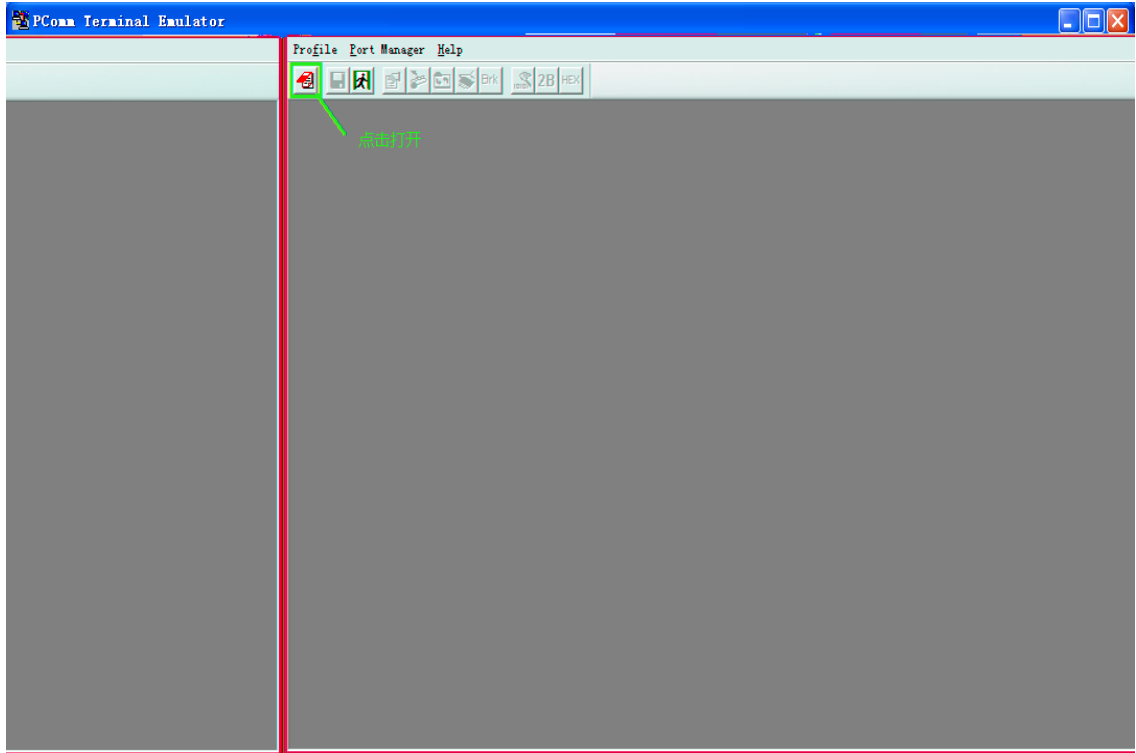


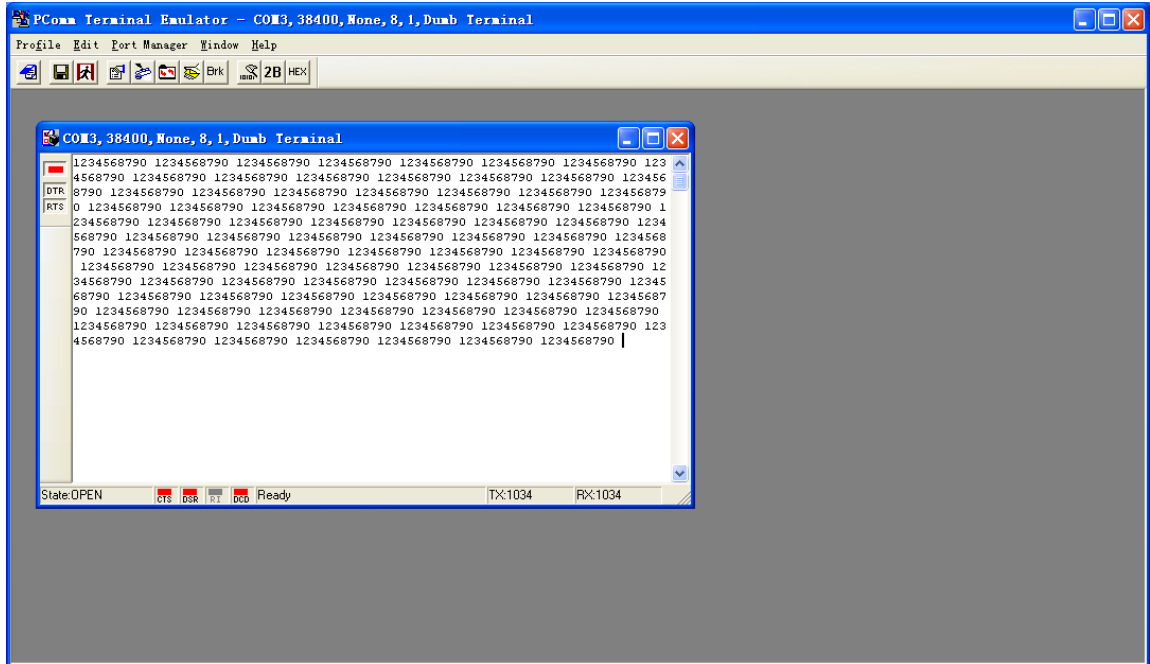
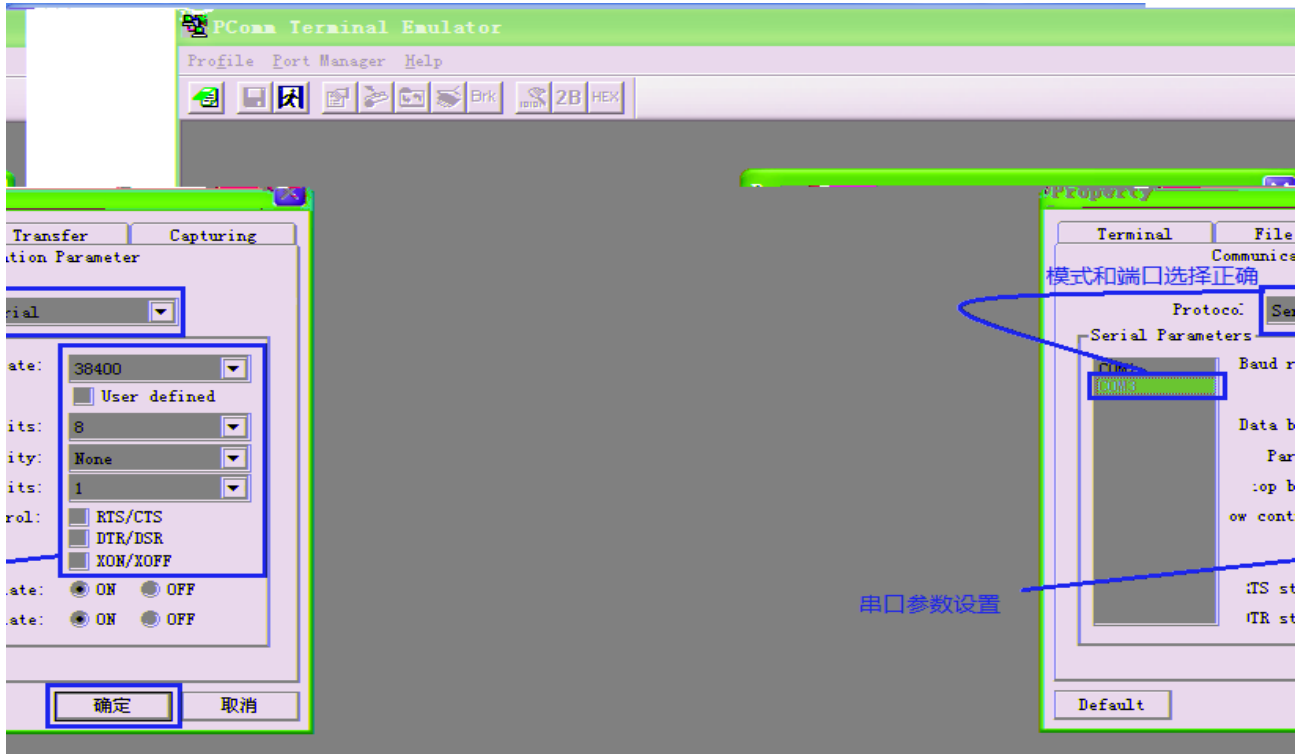
1





2 PComm





附环测接线示意图：



RS-232/422/485 Port Pinouts for NPort 5650

Pin	RS-232	RS-422 4-wire RS-485	2-wire RS-485
1	DSR		
2	RTS	TxD+	
3	GND	GND	GND
4	RxD-	TxD-	
5	RxD	RxD+	Data+
6	DCD	RxD-	Data-
7	CTS		
8	DTR		

