

MOXA www.moxa.com

Basic Settings OK!

Warning! The changes will take affect until Save/Restart the NPort.

You can Save/Restart NPort now or Save/Restart NPort until all other settings configured.

Back **Save/Restart** Home

- Main Menu
 - Overview
 - Basic Settings
 - Network Settings
 - Serial Settings
 - Port 1
 - Operating Settings
 - Port 1
 - Accessible IP Settings
 - Auto Warning Settings
 - Monitor
 - Change Password
 - Load Factory Default
 - Save/Restart

MOXA www.moxa.com

Network Settings

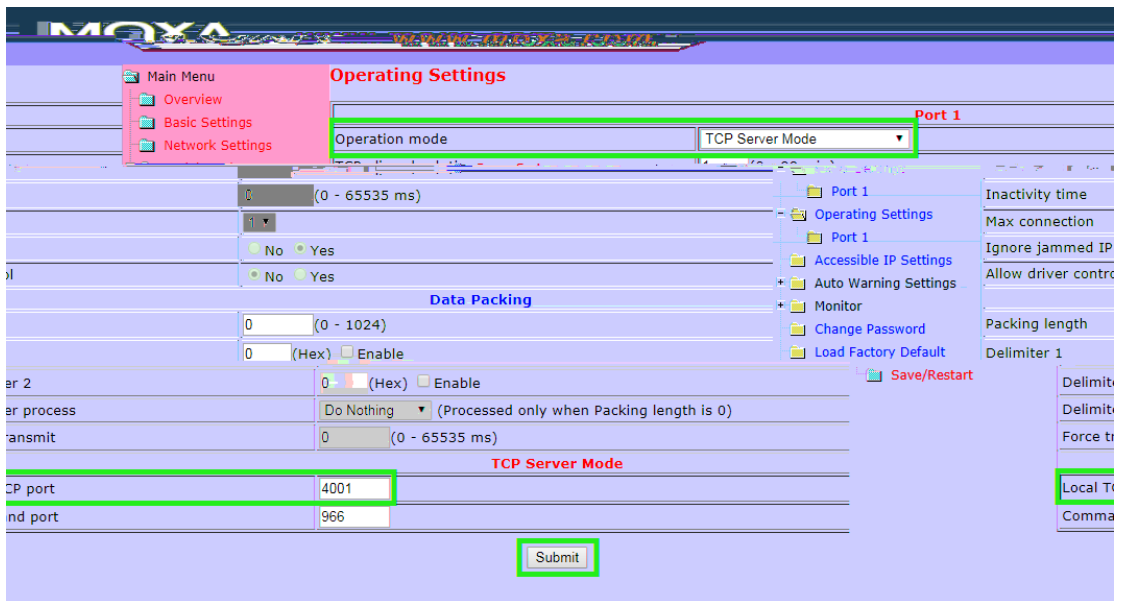
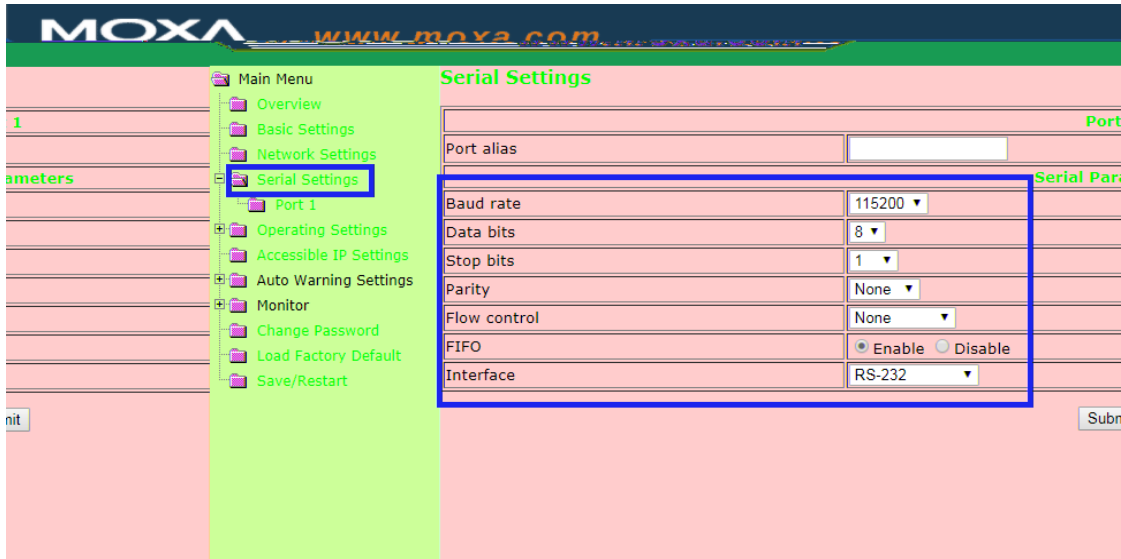
- Overview
- Basic Settings
- Network Settings
- Serial Settings
- Operating Settings
- Accessible IP Settings
- Auto Warning Settings
- Monitor
 - Change Password
 - Load Factory Default
 - Save/Restart

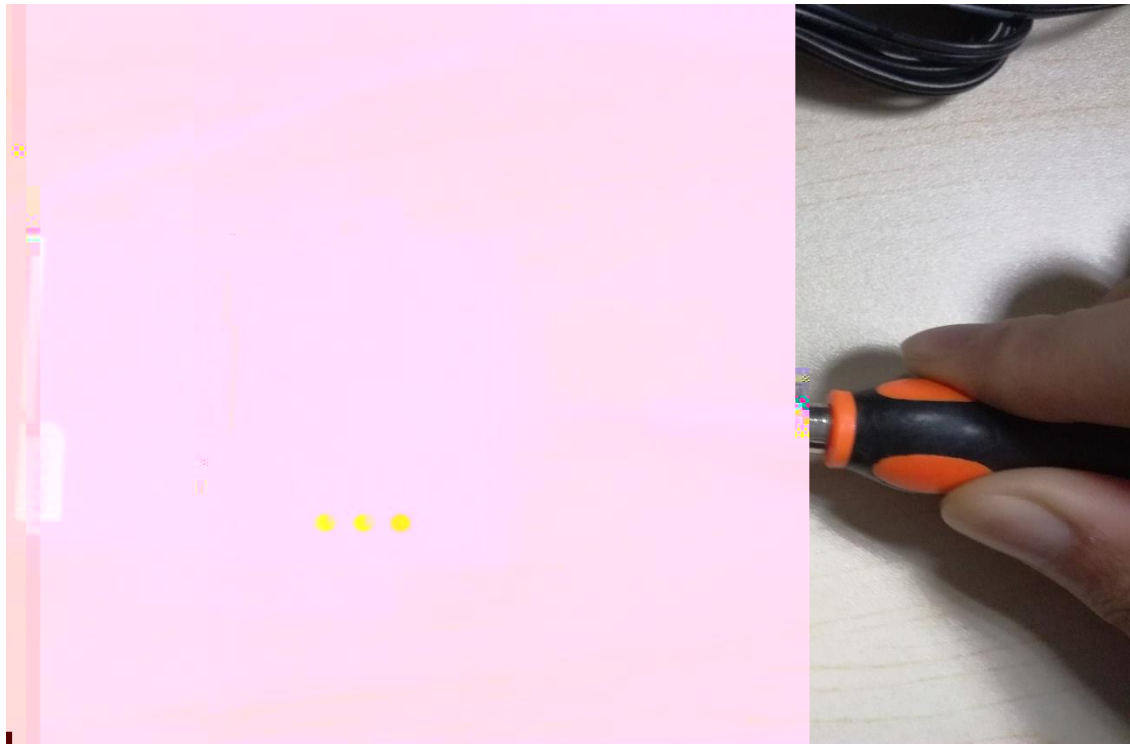
IP address	192.168.127.25
Netmask	255.255.255.0
Gateway	
IP configuration	Static
DNS server 1	
DNS server 2	
SNMP	<input type="checkbox"/> Enable <input type="checkbox"/> Disable
Community name	public
Contact	
Location	
Auto report to IP	
Auto report to UDP port	4002
Auto report period	10 seconds

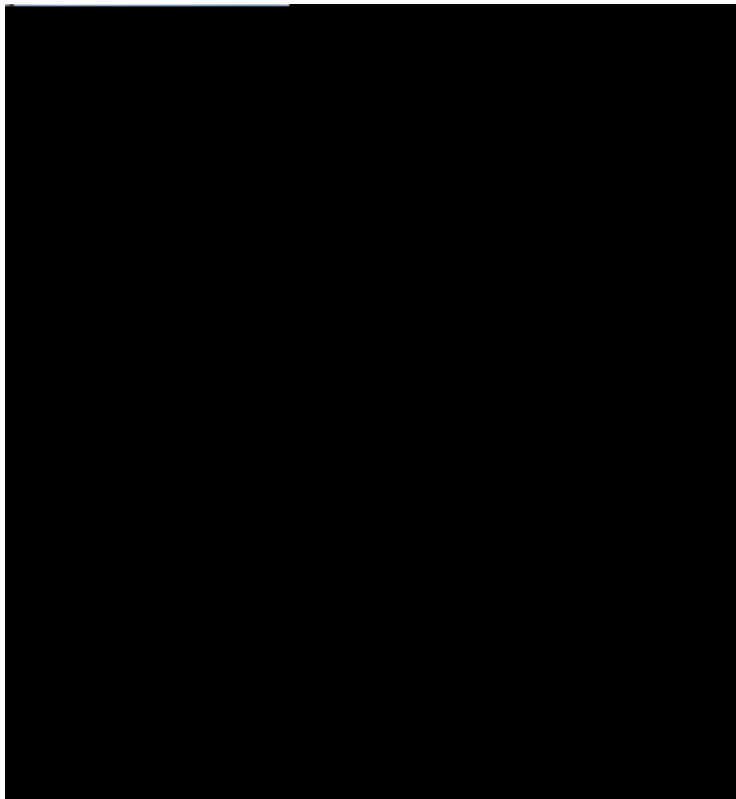
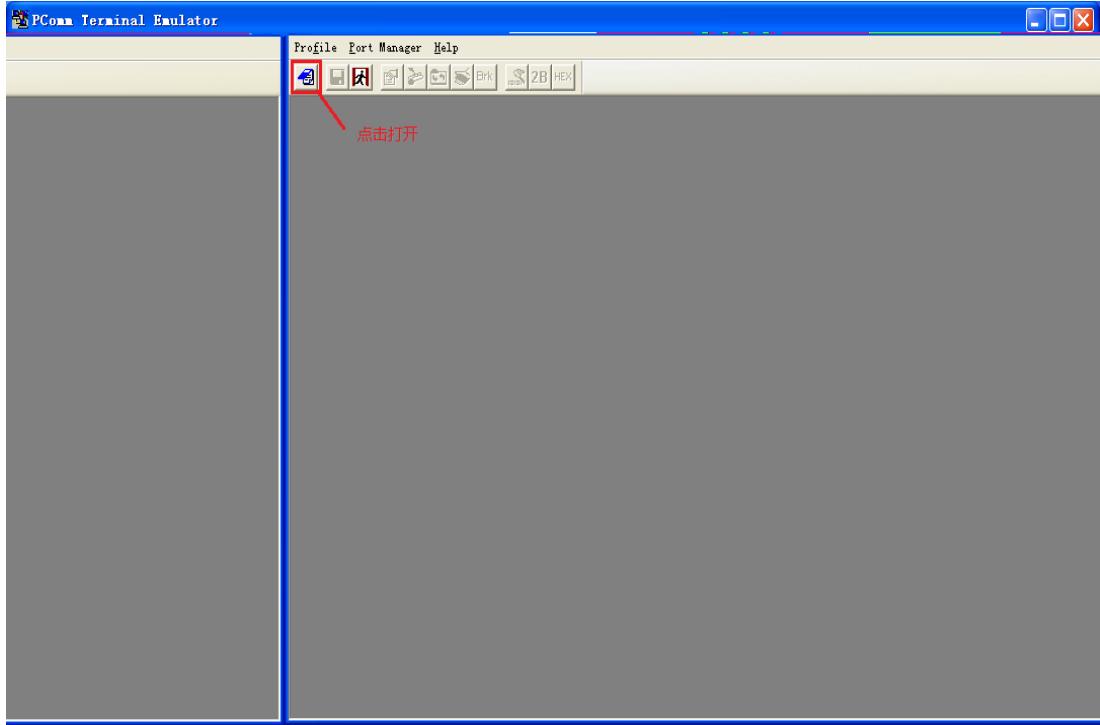
SNMP Setting

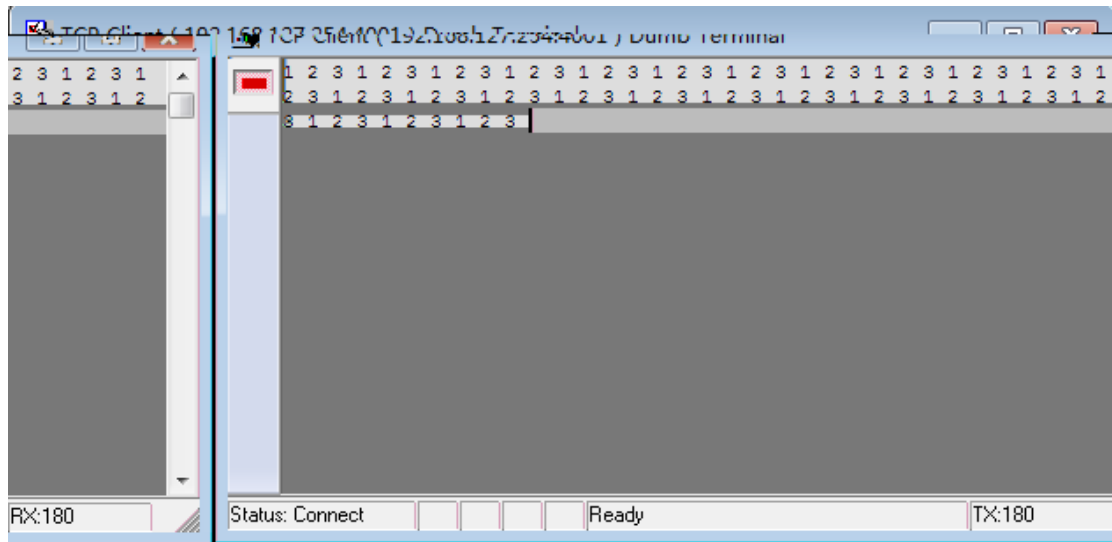
IP Address report

Submit









附环测接线示意图：



RS-232/422/485 Port Pinouts for NPort 5650

Pin	RS-232	RS-422 4-wire RS-485	2-wire RS-485
1	DSR	---	---
2	RTS	TxD+	---
3	GND	GND	GND
4	TxD-	TxD-	---
5	RxD	RxD+	Data+
6	DCD	RxD-	Data-
7	CTS	---	---
8	DTR	---	---

